

The ROTARY CLUB of



KONA WINS

Vocational
service

AWARD

FOR

KONA SEA CADET
TRAINING PROGRAM

In conjunction with Pacific Maritime Academy and Konawaena High School, the Rotary Club of Kona has provided the funds to start 30 young men and women to train for a maritime job.

The unique part of this education program is at the end of this course the students will be prepared to take the Coast Guard Exam for their Z card.

This Z card will enable the students to secure jobs in the maritime industry. According to Captain Alverson there are 300 entry level jobs coming up on cruise ships. Entry level jobs in the engineering, deck or services departments of a large cruise ship can earn as much as \$2,400.00 a month.

The school counselor will be interviewing all students and has been instructed to especially look for the students who have not been able to quite make the regular school curriculum.

A worthwhile vocational project for the youngsters in our community.

CLUB SERVICE DIRECTORS ANNOUNCED FOR 1982-1983

Club Service Barry Lang

Vocational Service Bob Bean

Community Service Jerry Cladfelter

Bulletin Editor Lars Sahl

NEW OFFICERS TAKE OVER 7/1/82

President David Rees-Thomas

Secretary Mark Rife

Treasure Jack Tuttle

Paul Johnston-named President
Elect for 1983-1984

OPPORTUNITY KNOCKS.

Next week we would like to collect \$50.00 from each member. Your board of directors have voted "that any member that pays \$50.00 the club Treasury will match that with \$50.00," \$100.00 will be sent to Rotary Foundation in your name making you a Paul Harris sustaining member. This will put you in the elite club and start you on your way to the \$1,000.00 goal.

SAVE THIS DATE

Installation of officers at
the Royal Sheraton Waikoloa.

YOUR PRIVILEGES AS A ROTARIAN

1. Fellowship with men of like ideals.
2. Unique opportunities to serve your community, improve your vocation, and promote international friendship.
3. Broad acquaintance with men of other business and professions.
4. Participation in stimulating programs at weekly meetings.
5. To meet other Rotarians when attending other Rotary clubs.

YOUR DUTIES AS A ROTARIAN

Attendance: A Rotarian should attend weekly meetings of his club. If he is absent four consecutive times without making up attendance, or if he attends less than 60 percent of the meetings during either six-month period of the club's fiscal year (and if such absence has not been excused by the board) his membership is automatically terminated.

Proposing new members: It is a privilege and obligation of every Rotarian to propose new members.

Service on committees: To promote the idea of service, every Rotarian should be active on the committee of his Rotary club to which he has been appointed by the president.

A WORLD-MINDED ROTARIAN IS...

...a man who holds peace between nations to be an essential for human survival - not merely an ideal to be proclaimed.

"WORLD UNDERSTANDING & PEACE THROUGH ROTARY"

FLY TO KONA
with
HAWAIIAN AIR
329-1646

TUTTLE FINANCIAL SERVICES, INC.
*Bookkeeping - Accounting
Tax Service - Individuals
and Small Businesses*
JACK TUTTLE 329-5567

Worship with Us
CALVARY COMMUNITY CHURCH
*Services at Kona Lagoon Longhouse
Sunday at 10:00 a.m.*
David Rees-Thomas
Pastor 329-1448

HUALALAI TRAVEL CENTER
329-6606
LARS SAHL KRIS HOLM

MIKE McCORMACK REALTORS
329-3549
PAUL JOHNSTON Broker-in-Charge

your AD HERE

BELL BOOK & CANDLE
CROSSFIRE GALLERY
PALANI'S, LTD.
PALANI CROSBY 329-1441

KONA MAINTENANCE CENTER, INC.
*AUTO REPAIR
Foreign & Domestic*
329-2191

PRE-CUT CEDAR HOMES of KONA
and General Contracting
Kealahakua Ranch Center
Chris & Dana Voorhees
Res. 322-3238
Bus. 323-2551

KONA LAUNDRY
and
DRY CLEANING, INC.
329-1631

SPORT FISHING
HANA MANA
329-3493
Captain Chip Fischer Captain Jack Fischer

KONA HAWAIIAN LANDS, LTD.
329-6433
DICK DENISON WALTER PERREIRA
Broker Broker

Make It Beneficial To All Concerned
BISHOP TRUST COMPANY
Mike Belcher 329-6366

SHOP AT
PAY AND SAVE
ROD CURFEW-Mgr. 329-3577

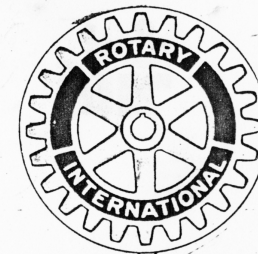
JIM WITHROW, CLU
and ASSOCIATES
INSURANCE ESTATE PLANNING PENSIONS
329-6625

SPORT FISHING
ECONOMY CHARTERS
Captain Ralph Rehberg 324-1234

INTERNATIONAL PRESIDENT: Stanley E. McGaffrey

DISTRICT 500 GOVERNOR: Lambreth Hancock

The ROTARY CLUB of KONA



THE FRIENDLIEST ROTARY CLUB IN THE WORLD

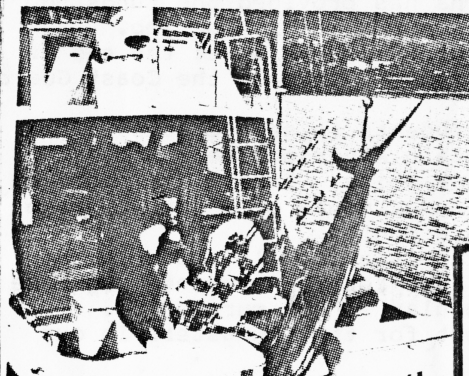


PRESIDENT
Ralph Rehberg
Post Office Box 175
Kailua-Kona, HI 96740

TREASURER: Paul Johnston
SERVICE DIRECTORS:
CLUB - David Rees-Thomas
INTERNATIONAL - Bill Crockett
COMMUNITY - Jerry Miller
VOCATIONAL - Cliff Poulton
PROGRAM CHAIRMAN - Dick Dennison
SERGEANT-AT-ARMS - Paul Nolte



SECRETARY
Gary Grimmer
Post Office Box 1720
Kailua-Kona, HI 96740



AT LEFT IS THE VIEW
FROM OUR MEETING
ROOM AT THE KING
KAMEHAMEHA HOTEL.
LUNCHEON MEETING
HELD EACH THURSDAY
AT NOON.

OUR OPENING PRAYER - *ALMIGHTY GOD,
bind us together in the true spirit of Rotary, keep-
ing our hearts pure, our lives clean, our spirits
humble, and our thinking straight. -Amen*